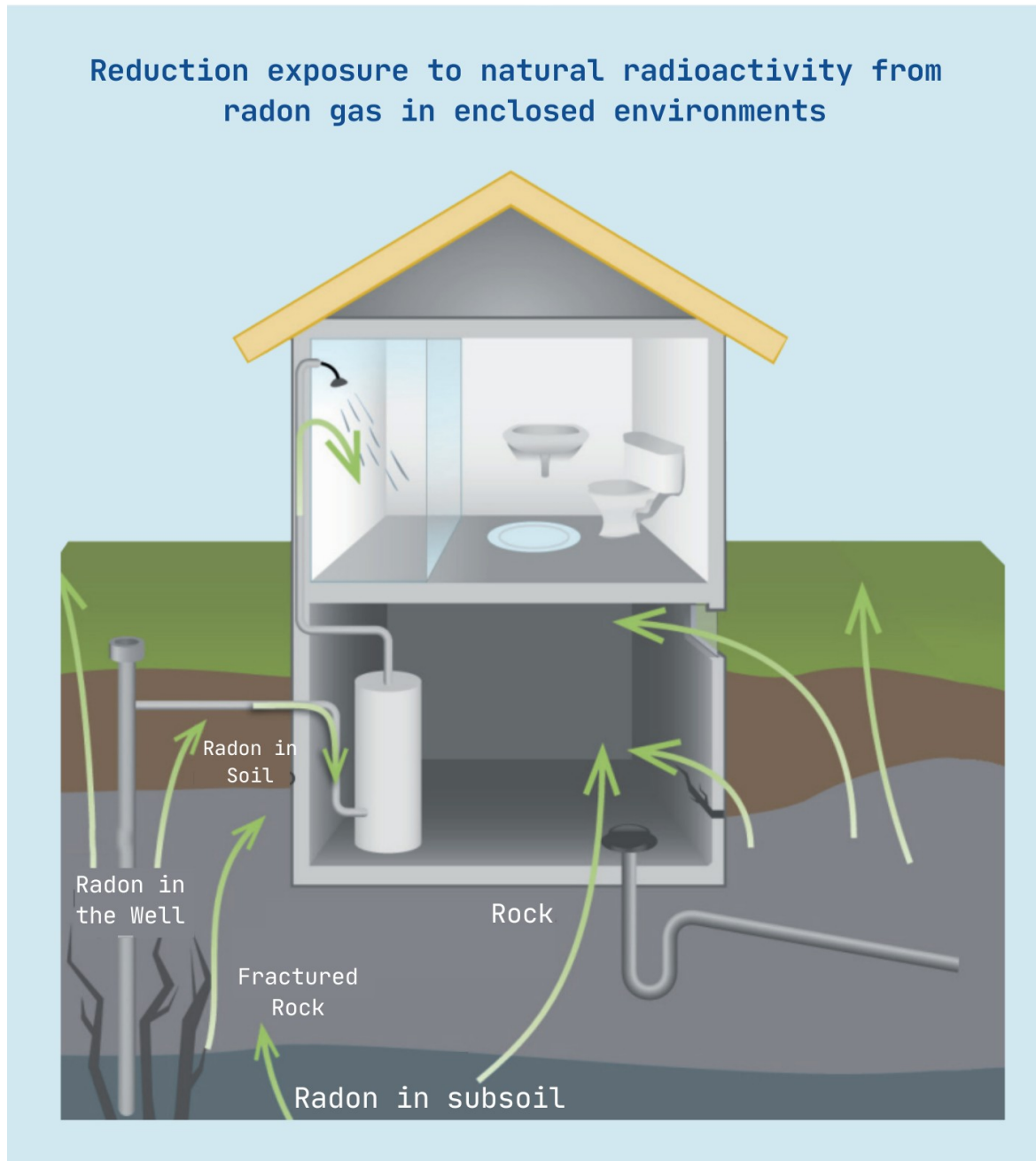


## Reduction exposure to natural radioactivity from radon gas in enclosed environments



The Regional Law 3 November 2016 No. 30 “Rules on the reduction of exposure to natural radioactivity derived from radon gas in confined environments”, as amended by Article 25 of Regional Law 36/2017 of 09/08/2017 (BURP No. 96 of 11/08/2017), requires radon measurements for all places accessible to the public, regardless of their location, throughout the entire regional territory.

For strategic buildings referred to in Ministerial Decree **D.M. 14.01.2008** and intended for education purposes, including nursery schools and kindergartens, the reference limit level for radon gas activity concentration in enclosed environments, and in all the rooms of the building concerned, must not exceed **300 Bq/m<sup>3</sup>**, measured using passive instrumentation.

For basements, semi-basements and ground-floor rooms of buildings other than those specified above and offices and public spaces, excluding residential premises and isolated technical rooms serving network systems, the reference limit for radon gas activity concentration in enclosed environments must not exceed **300 Bq/m<sup>3</sup>**, measured using passive instrumentation.

Ground - floor rooms with a surface area not exceeding **20 m<sup>2</sup>**, are exempt from measurement requirements, unless their structural connection with other rooms results in exceeding the size limit established for the exemption, provided that they are equipped with adequate ventilation.

The measurement is carried out using passive instrumentations with ready-to-use CR-39 nuclear track detectors: it will only be necessary to remove the devices from the shipping package and place them at a height between approximately **1 and 3 metres**, in an area away from heat sources and air exchange points.



The measurement will be established as the average concentration value over an annual period, divided into two semesters: spring–summer and autumn–winter.

At the end of the measurement activities, we will draft the communication to be submitted within one month from the conclusion of the survey to the relevant municipality and to **ARPA Puglia**.

In case of failure to submit the measurements within eighteen months from the effective date of the regional law, the municipality shall issue an ordinance requiring the submission of the measurements carried out, allowing a period not exceeding thirty days. Failure to comply within this deadline will, by operation of law, result in the suspension of the Certificate of Use and Occupancy.

